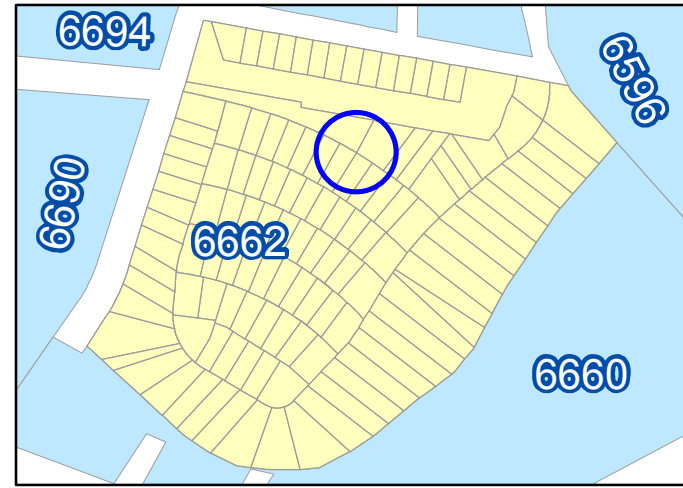


NYC Digital Tax Map

Effective Date : 09-18-2017 12:28:44
End Date : Current
Staten Island Block: 6662 Inset: 6



Legend

- Streets
- Miscellaneous Text
- ↓ Possession Hooks
- - - - - Boundary Lines
- ↓ Lot Face Possession Hooks
- Regular
- - - - - Underwater
- Tax Lot Polygon
- Condo Number
- Tax Block Polygon

