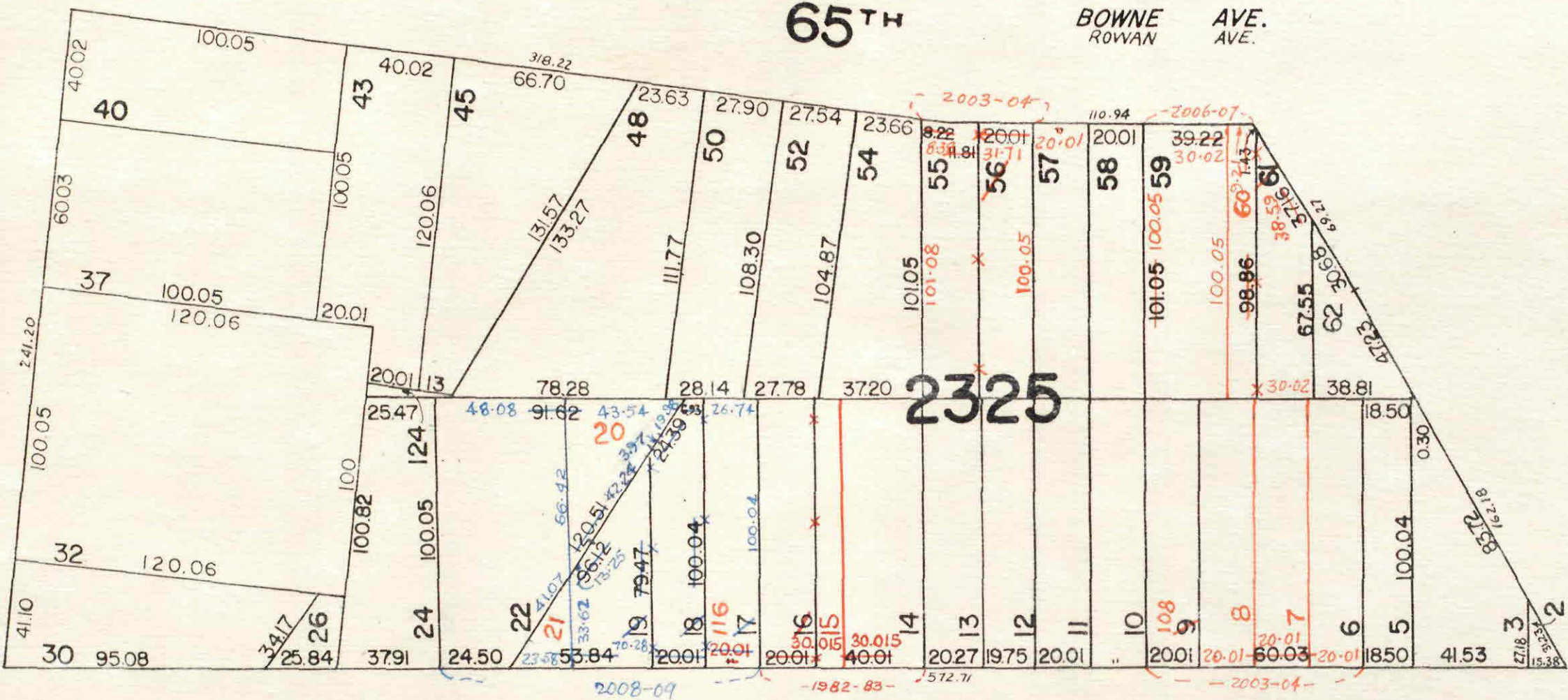


SEE VOL. 3

65<sup>TH</sup> BOWNE AVE. ROWAN AVE.

ST.

BOULD. AVE.



HIGHWAY



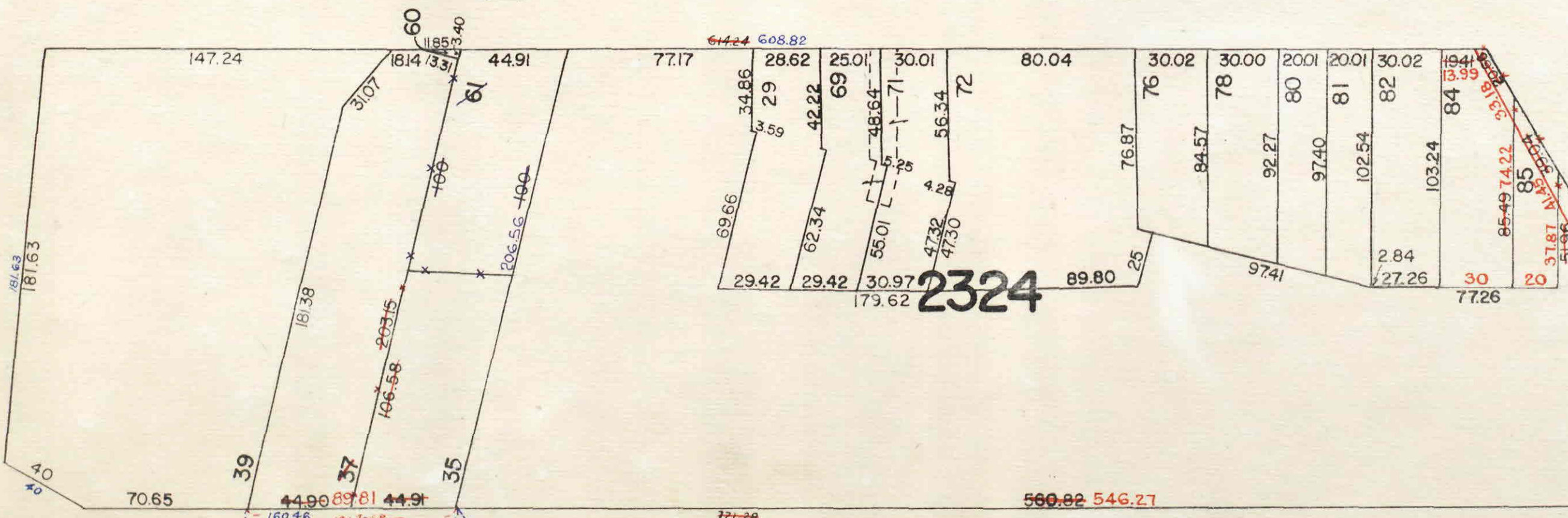
48<sup>TH</sup> AVE. MONROE ST.

SEE SEC. 8

SEE VOL. 2

64<sup>TH</sup> ST. HICKS AVE.

QUEENS THOMSON



CONNECTING

ST.

20

20

SEE PAGE 19